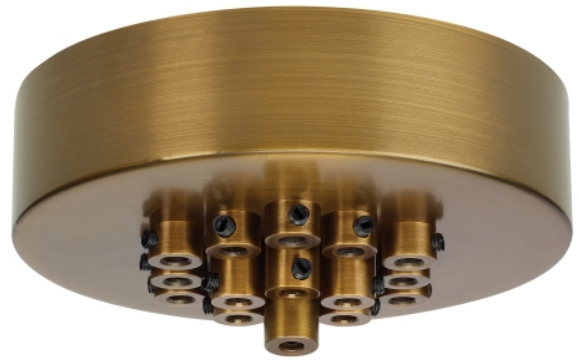


PRODUCT FEATURES

- Customizable canopy helps create unique chandeliers for any space
- Clean and simple design
- Square, 7-Port and 11-Port canopies also available by Tech Lighting
- Available in modern finish options
- Ideal for residential and commercial lighting applications
- Protected by a 1-year warranty



LAMPING

Aged Brass



Satin Nickel

Aged Brass

ORDERING INFORMATION

700TDMRD19T FINISH

- R AGED BRASS
- S SATIN NICKEL

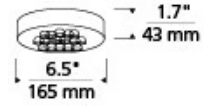
700TDMRD19T _____

JOB NAME _____

NOTES _____



SPECIFICATIONS



PRIMARY MATERIAL	Metal
SHADE MATERIAL	
NET WEIGHT	15 lbs
HEIGHT	1.7in
WIDTH	6.5in
LENGTH	6.5in
WET LISTED	
DAMP LISTED	Yes
DRY LISTED	
GENERAL LISTING	ETL Listed
INCLUDES	

LAMPING SPECIFICATIONS

	LED LAMP	INTEGRATED LED	NON LED	NO LAMP
DELIVERED LUMENS				
WATTS				
MAX WATTAGE PER BULB				
INPUT VOLTAGE			120VV	
DIMMING TYPE*			ELV	
CCT				
CRI				
LED LIFETIME				
L70				
AVERAGE BULB HOURS				
FIELD SERVICEABLE LED				
LAMP BASE				
LAMP SHAPE				
LAMP INCLUDED?				
WARRANTY**			1 Year	

*Dimming information available at www.techlighting.com/Downloads#dimming
 ** Visit techlighting.com for specific warranty limitations and details.

T20 / T24 / JA8 INFORMATION

	Integrated LED	Replacement LED Lamp	No Lamp *
This product can be used to comply with California Building Energy Efficiency Standards 2016 Title 24 Part 6 / JA8.			N/A
This product can be used to comply with California Appliance Efficiency Standards 2016 Title 20 and may be shipped to and sold in California.			N/A

* If a light fixture or component does not include a lamp or light source, it is the responsibility of the customer to select a lamp that meets the T24 and T20 requirements.

